

# LA MAISON BLANCHE

## 3522

Truly French. And truly classic. This elegant home has a distinctive, memorable style.

Another open plan from the entry to the dining room, living room and combined kitchen and family room, the spaces of this home flow together quite gracefully. An open staircase in the entry leads to the two large upstairs bedrooms. Each bedroom shares a common tub, but each has its own vanity and toilet.

Downstairs, from the kitchen, a private passageway leads past the powder room to the sitting area. This room could easily be called the garden room, with so many windows and French doors opening to the outside. Double doors open to the large master bedroom and beyond are two separate bath arrangements, each with its own walk-in closet.

The utility area beyond the kitchen includes a separate stairway to an extra room above the garage, providing perhaps another bedroom, an art studio or a small secluded office.

### Possibilities:

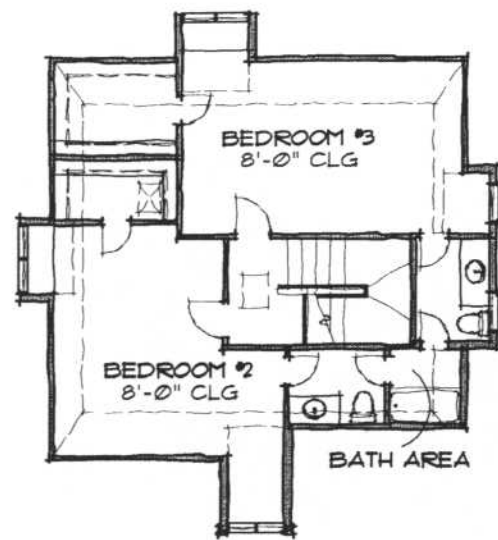
1. The master bedroom could be expanded into the rear yard.



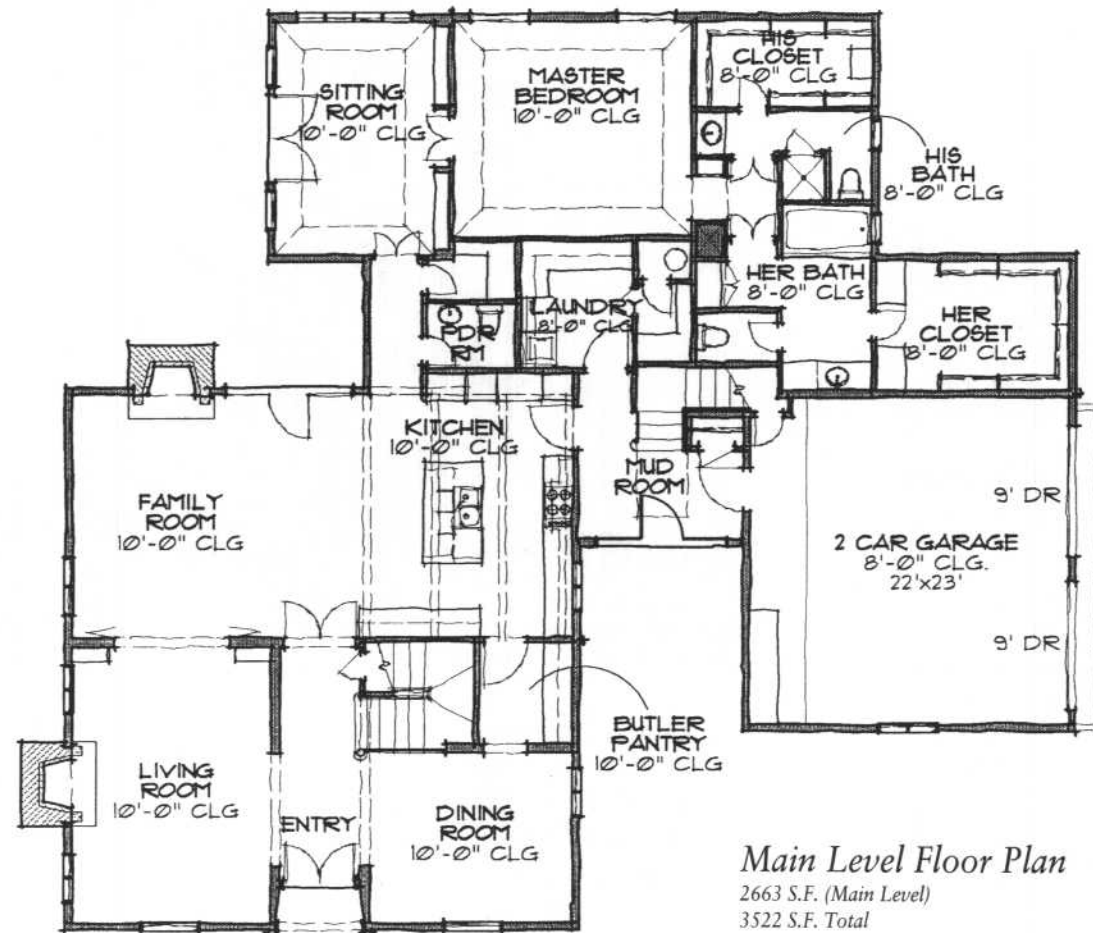
**MAIN LEVEL**  
 Entry 6'-0" x 17'-0"  
 Living Room 13'-8" x 20'-0"  
 Dining Room 12'-0" x 14'-0"  
 Kitchen/Family Room 16'-6" x 35'-0"  
 Utility Room 7'-6" x 9'-0"  
 Sitting Room 9'-0" x 16'-6"  
 Master Bedroom 15'-0" x 16'-6"  
 Master Closet (#1) 6'-0" x 12'-4"  
 Master Closet (#2) 8'-10" x 13'-0"

**UPPER LEVEL**  
 Bedroom (#2) 16'-0" x 16'-0"  
 Bedroom (#3) 19'-8" x 11'-8"  
 Extra Room 15'-0" x 15'-6"

**OVERALL**  
 74'-6" x 64'-0"



*Upper Level Floor Plan*  
 859 S.F. (Upper Level)



*Main Level Floor Plan*  
 2663 S.F. (Main Level)  
 3522 S.F. Total

